

# Whitelands College

## **Your Guide**

2025/26

Welcome to the University of Roehampton	3	The Whitelands Guild	16
Welcome to Whitelands College	3	Merchandise	17
A brief history of the College	4	College Clothing and Merchandise	18
May Day	5	Chaplaincy	19
Whitelands College Moves	5	Events and Activity in the Chaplaincy	21
College Life	6	On campus facilities	23
Wellbeing	7	Computer Suite	23
General Wellbeing Provision	7	Quiet study room	23
Student Medical Centre	8	Student Common Area (The SETT bar)	23
Disability and Dyslexia Services	8	College Kitchen and Student Lockers	23
Mental Health and Counselling	8	Whitelands Diner	23
Finance Support	8	Sports Field and Grounds	23
Academic Achievement Advisers (AAAs)	8	Living at Whitelands	25
Your College Team	9	Health	25
College Staff	9	Trespasser or Unwelcome Visitor and Overnight Visitors	25
Head of College	9	Residency Agreement	25
Student Wellbeing Officer – SWO	11	Be Considerate	25
College Chaplain	11	Students' Right to Privacy	25
College Life Development Officer – CLDO	12	Parking	25
Senior College Warden	12	Laundry Rooms	25
College Warden	12	Shopping	25
Whitelands Student Leaders	13	Smoke and Fire Alarms	26
Student President	13	General Fire Safety	26
May Monarch	13	Smoking	26
		Electrical Appliances	26
		Security Staff	26
		Cleaning in College Rooms	26
University of Roehampton College Cup	15	College Map	27
The College Badge, Motto and Mascot	15	Directory of College Staff	31





# Welcome

## Whitelands College



### Congratulations on gaining a place at the University of Roehampton and becoming a member of Whitelands College.

We hope that, like many students before you, you will find life in the college a rich and rewarding experience. Each of the four colleges brings with them its own distinctive character and identity. Here at Whitelands we are very proud of our long history and traditions. This is a Church of England college, although we welcome students of any faith or none. In 2024 the college celebrated its 183rd anniversary, which makes it not only the oldest of the Roehampton colleges, but one of the oldest in England outside of Oxford and Cambridge. Whitelands moved 20 years ago to our present site, which itself has an even longer history, as you will realise when you explore the fine old building, Parkstead House. But Whitelands is a college for the 21st century, with state-of-the-art accommodation

and teaching rooms, surrounded by extensive park-like grounds, which makes it an ideal environment to live, study and socialise in. The grounds include a playing field, which is home to a busy sports programme. We are sure you will find that being a Whitelander is what makes your time at university particularly special. Whitelands College provides an open, encouraging and supporting atmosphere for all its members. It is a place where all are welcome, where diversity is celebrated, and which offers many opportunities to enrich your academic studies by experiencing college life to the full. From all of us here at Whitelands, a very warm welcome and we look forward to getting to know you all, and hope you have a really enjoyable experience filled with laughs, joy and success during your time at Roehampton.

# A brief history

Whitelands College is one of the oldest higher education institutions in England, predating every higher education institution except Oxford, Cambridge, London and Durham.

The Church of England's National Society founded the College in 1841 as a teacher training college for women. It took its name from Whitelands House, a Georgian school building on the King's Road, Chelsea, where the college was first located. The stated aim of the new establishment was "to produce a superior class of parochial schoolmistresses". During the early years, the conditions at Whitelands were cramped and unsanitary and students were forced to work long hours with little or no leisure time. In 1874, the



Rev'd John Pincher Faunthorpe was appointed Principal of Whitelands College and enlisted the interest of John Ruskin, the great Victorian art critic and political economist, who gave numerous gifts of books and pictures to the College. Ruskin introduced William Morris, leader of the Arts and Crafts movement, and Sir Edward Burne-Jones, the eminent Pre-Raphaelite artist, to the College. Together they designed artefacts for the newly erected College Chapel, the most notable being the Burne-Jones stained glass windows and the William Morris reredos. These remain to this day treasured possessions of the College.



## May Day

In 1881, Ruskin instigated the annual May Day ceremony. It was Ruskin's wish that each year the students should elect one of their number to be their May Queen. This tradition has continued every year since then, growing and adapting through the ages until today. Each year the current students of Whitelands elect a May Monarch – a May Queen or a May King.




## Whitelands College Moves

By the early years of the twentieth century, Whitelands College was regarded as one of the foremost women's teacher training colleges in the country and had outgrown its original site in Chelsea. In 1930 Whitelands moved to Putney. The College began occasionally admitting men from the 1950s and became fully co-educational in 1966. In 1975, the College joined with three other south-west London teacher training colleges – Digby Stuart, Froebel and Southlands - to form the Roehampton Institute of Higher Education. On 1 August 2004, the University of Roehampton was awarded independent status. In January 2005 Whitelands moved again, this time to its present site, within walking distance of the other three colleges. The 14-acre site is situated in Roehampton overlooking Richmond Park. Within the College sits the Grade I listed Georgian villa, Parkstead House, which was built in the early 1760s. The sandstone quadrangle was built a century later, when the site was occupied by a Jesuit Novitiate. The buildings were modified and enlarged for the College, and include modern lecture theatres, classrooms and state-of-the-art science laboratories.

# College Life

Being part of a college means you have access to a large range of resources, support, and activities together with everything the wider University and Roehampton Students' Union have to offer. Many of these will be described in this handbook, but you will also receive information with the dates, times, and locations of our college's events over the coming weeks.

The best way to keep up to date with what is happening at Whitelands is to follow our college social media accounts:

 Facebook: **Whitelandscollege**

 Instagram: **Officialwhitelandscollege**

You can also visit the College Office to talk to a member of staff about what is happening. You are welcome to suggest events, activities and ideas you would like to see or help set up. The Whitelands College Office is based on the ground floor of Parkstead House in G013.

No matter where your interests or passions lie, there is something for everyone at Whitelands and the University as a whole. From sports teams to societies, we are sure you will find something to expand your friendship circles and fill up your free time. For an overview of what is available across the campus visit:

[www.roehampton.ac.uk/student-life](http://www.roehampton.ac.uk/student-life)  
and [www.roehamptonstudent.com](http://www.roehamptonstudent.com)



# College Life

Being a part of our college we hope that you come to feel like this small community is a place of belonging, where you are helped throughout your time at Roehampton to flourish.

## Student Wellbeing

Whitelands College has designated Student Wellbeing Officers to support anyone experiencing difficulties with their wellbeing. Your Wellbeing Officer is your first contact for any doubt or question around wellness resources or issues. They can refer and signpost you to a range of support services both within the University and externally, depending on your needs and specific context.

The Whitelands College Wellbeing Officer is here as your first port of call if you are facing any difficulties, uncertainties or anxieties. For more information, please feel free to contact them via email ([WhitelandsWellbeing@roehampton.ac.uk](mailto:WhitelandsWellbeing@roehampton.ac.uk)).

SCAN HERE

Scan the QR code to go straight to the bookings page.



As well as 1:1 appointments, the Wellbeing Officers have bookable daily drop-in slots to meet with you on the same day. These appointments run every weekday during term time from 1–2.30pm and are held both online or in-person at the Richardson Building, in the Wellbeing Centre.

SCAN HERE

Scan the QR code to go to the daily drop-in slot bookings page.



## Student Medical Centre

We encourage all our students to make use of our on-campus medical centre, which is located in Froebel College, in the Old Court buildings. The Centre offers GP and nurse appointments.

To register or book an appointment, call **020 8392 3679** or email [waccq.studentmedicalcentre@nhs.net](mailto:waccq.studentmedicalcentre@nhs.net)

## Disability and Dyslexia Services

Students with disabilities and specific learning differences can receive advice and support from the University. To discuss your needs, visit the Information Centre (located at Digby Stuart College), call the service on **020 8392 3636**, or email [disabilities@roehampton.ac.uk](mailto:disabilities@roehampton.ac.uk)

## Additional mental health support

The Wellbeing Team at Roehampton includes professional and training Counsellors who can support you via a one-off session or short-term counselling. You can self-refer to these services, but we recommend you discuss with your Student Wellbeing Officer if you think one of these options through Counselling could be a good fit for you.

Our Mental Health Advisers are a multidisciplinary team who can support you if you are experiencing difficulties related to a specific mental health diagnosis or condition. If you are struggling and have a diagnosed mental health

condition, or you would like guidance in connecting with higher levels of care through NHS or other medical providers, discuss with your Student Wellbeing Officer if seeing a Mental Health Adviser could be a good fit for you.

## Additional mental health support

Get the RoeWellbeing App. We have a custom free app for you that gives you direct access to all the information you need about referrals and tools to help you keep track and manage your own wellbeing through your Roehampton life. Download in the Apple app store/ Google play store.

Follow Wellbeing at Roe\_Support for campaign updates and general wellbeing insights.

## Finance Support

If you have funding issues while at university, we have a team available to help support you. They can provide advice and help with questions about your loan, grants, scholarships and other financial matters. Contact the team through a Wellbeing Officer, on **020 8392 3090**, or on [studentfinance@roehampton.ac.uk](mailto:studentfinance@roehampton.ac.uk)

## Academic Achievement Advisers (AAAs)

If you need some additional support with your learning skills, the AAA team can help. They can provide you with personal advice and support and point you to helpful resources online. They also run workshops, events and drop-in sessions in the library. More information is available on the Learning Skills Hub on Moodle.

## Bystander Intervention

The Bystander Intervention Team is responsible for reinforcing the university's zero tolerance stance on harassment, abuse and misconduct. The team consists of trained students who are present at late-night events to provide pastoral support, proactively intervene in problematic situations, and support disclosures of sexual violence. If you would like more information on the Bystander Intervention Team contact [BILs@roehampton.ac.uk](mailto:BILs@roehampton.ac.uk)



# Your College Team

The aim of the college is to make sure that Whitelands is a safe, fun environment so that all students, whether you live on or off campus, get the most out of your time at Roehampton.

We meet regularly with Accommodation, Security, Estates and Campus Services as well as Catering to ensure we are up to date on all developments. If you have any concerns about the college grounds and buildings, social events, your accommodation, college life, or if you have any suggestions to improve any aspects of college life, don't hesitate to bring them to a member of our team.

**Please Note:** The College team is not responsible for any aspects of your studies. For these matters contact your academic department through the general office in reception.

## College Staff



### Dr Nick Mayhew-Smith

Head of College

Dr Nick Mayhew-Smith became Head of Whitelands College in September 2024. He has worked for many years at the university as a researcher and writer about environmental theology, sacred landscapes, and Celtic spirituality, and is passionate about creating positive learning

environments of every kind for students and staff. He previously served as deputy head of Southlands College at the University of Roehampton, where he forged a partnership with the London Wetland Centre and developed numerous social learning projects to support the work of teaching staff and students alike. Nick has written several books about connecting to the landscape in various creative ways, including Britain's Pilgrim Places (2020), and Landscape Liturgies (2021) which was produced with the Susanna Wesley Foundation at Southlands College. He has many years' experience in lay ministry across a number of churches in South London.

Room Number: **G14** | Mobile: **07831 991314**  
Email: **[nick.mayhewsmith@roehampton.ac.uk](mailto:nick.mayhewsmith@roehampton.ac.uk)**

“It must be borne in mind that the tragedy in life doesn't lie in not reaching your goal. The tragedy lies in having no goal to reach.”

– Dr Benjamin Mays







## Oli Ottoway

### Student Wellbeing Officer – SWO

I'm Oli, I am the designated Whitelands Student Wellbeing Officer – The wellbeing team is here to support you if you are experiencing non-academic challenges which are impacting on your wellbeing. We can talk through the issue in confidence. We can

also refer and signpost you to a range of support services both within the University and externally. To contact me and book in a chat, in person, online (via Microsoft teams)-or by phone please email me on [WhitelandsWellbeing@roehampton.ac.uk](mailto:WhitelandsWellbeing@roehampton.ac.uk)



## The Rev Dr Daniel Eshun

### College Chaplain

I'm Daniel Eshun, the Chaplain of Whitelands College and Anglican Chaplain to the University. I am available Mon–Fri, 8:30am–5pm. I am located at the Chaplaincy Office, G01. Please do come and see me whenever you need any assistance

or just to have a conversation, or a cup a coffee with me. My door is always open, and you are very welcome at any time. My role as Chaplain is to offer every support you need to have fun and enjoy your studies. The Chaplaincy puts on a range of events that are advertised around the College and the wider University community. There is Morning Prayer every Mon–Fri at 8:30am and a Communion Service on Fridays 4.30pm at Whitelands. If you wish to speak with me do not hesitate to contact me on extension **3516**.



## Steven Taggart

### Student Leadership Manager

Hello Whitelanders, my name is Steven Taggart and I am your Student Leadership Manager here at Whitelands College. I work with the Whitelands team to help coordinate the work of the College and logistics of its running day-to-day, alongside organising

special events. I also manage the Whitelands Residential Community Leaders (RCLS) & College Community Leaders (CCLS) to ensure everyone is happy in their flats and as a member of the college. I will be your first point of contact if you need help with anything relating to the college. If you are not sure who to ask, then please get in contact with me and I'm sure I will be able to point you in the right direction.

Room: PH.G013 | Office Hours: 9am–5pm, Mon–Fri  
[Steven.Taggart@roehampton.ac.uk](mailto:Steven.Taggart@roehampton.ac.uk)  
Tel: **+44 (0) 20 8392 3511**



## Gemma Bentley

### Whitelands Archivist

Gemma is our college archivist and works to ensure our history archives and records are kept safe. She is part of the Library Services team, and has been working as the Whitelands College archivist since 2014. The collections are fascinating and open to explore. Contact Gemma

to make an appointment or drop by to chat on Mondays.

Room Number: **G13** | Tel: **020 8392 8117**  
[gemma.bentley@roehampton.ac.uk](mailto:gemma.bentley@roehampton.ac.uk)



## Shai Danmole-Ellis

### Senior College Warden

My role as Senior College Warden is to encourage positive behaviour and responsible citizenship on campus. I work with your Flat Reps to make sure people are living together well in College accommodation- looking out for each other and following the rules, as well as with your core College

team on any wider behavioural and community issues. Please do contact me if you have any concerns about behaviour on campus, either in a flat or elsewhere. I also work closely alongside your College team on disciplinary and wellbeing issues, to ensure everyone has the best experience possible of University.

My team of College Wardens are available overnight and on weekends to respond to emergencies or out of hours Wellbeing issues. You can contact the Wardens by calling Security on ext. **3333** using an internal phone or call directly on **020 8392 3333**. Download the Roe Wellbeing App and you can use that to call Security for a College Warden as well!

You can contact me on: Ext **7297** or email:  
[s.danmole-ellis@roehampton.ac.uk](mailto:s.danmole-ellis@roehampton.ac.uk)



## Olivia Ogunbunmi

### Senior College Warden

Our roles as Senior College Wardens are to encourage positive behaviour and responsible citizenship on campus. We work closely with your Residential Community Leaders (RCLs) to make sure people are living together well in college accommodation – looking out for

each other and following the rules. You are welcome to visit us if you have any concerns about behaviour on campus, either in a flat or elsewhere. We also work alongside others on serious disciplinary and wellbeing cases, to ensure everyone has the best experience of university.

Email: [olivia.ogunbunmi@roehampton.ac.uk](mailto:olivia.ogunbunmi@roehampton.ac.uk)



## Karolina Stawicka

### College Warden

Your College Warden works together with student leaders and others in the team to make sure students on campus are safe, looked after, getting along well together, and following the student code of conduct. Your Warden provides pastoral care to support the Wellbeing and

Security teams where needed, outside of office hours. It is also their role to help ensure the college community life is safe, supportive and nurturing. Together with the college team the Warden will help build a community and encourage responsible citizenship, informed by the values of the college.

Call security on ext. **3333** and ask for the warden if you need to speak to them.





# Whitelands Student Leaders



**Abbigail Parkin**  
Student President

Hi there, I am Abbigail (Whitelands College President). I am a friendly face around Whitelands, Psychology and This Girl Can. I am always up for a chat or fun time. I will always try my best to support Whitelands students. Make sure to follow my Instagram – [@whitelands\\_president\\_abbigail](#) to keep updated on anything Whitelands related.



**Keira Williams**  
Deputy College President

Hey, welcome back to Whitelands! Whether you are a new or continuing student, I'm excited to represent you! If you see me around, feel free to come and have a chat. I aim to be a friendly face on campus for everyone. This is

going to be an exciting year, so feel free to follow along on Instagram [@whitelandsvicepresidentkeira](#) for updates and events throughout the year. Remember to stay focused, stay determined, always be kind, give yourself grace, small steps every day – this year's yours to flourish.



**Hanna Baxter**  
"Queen Hanna"  
May Monarch 2025

Hey you, I'm Hanna! As this year's elected May Queen, you'll see me around campus organising events and raising money for my chosen charity – Dose of Nature. I love bringing people together so, if you spot me around campus, please

say hi or message me via Instagram: [@whitelands\\_may\\_monarch](#) to find out about the next event.





# University of Roehampton College Cup

Our colleges run student events throughout the year, including student-led parties, formal dinners, award ceremonies, exhibitions and much more.

We have a range of inter-college competitions, including sports matches and the Roehampton College Cup. In this annual competition each college enters teams of students to compete in varying challenges across the year to earn points, all in the hopes of winning the cup for their elected college and team. The cup is open to all students and can be a fun way to compete with your fellow students from other colleges.



## The College Badge, Motto and Mascot

These are three symbols of Whitelands that crop up all over the place. The badge and the motto have been part of the College since the nineteenth century, when Whitelands was a teacher training college for women.

The badge symbolises Saint Ursula who is the Patron Saint of schoolgirls and the College's chosen saint. She is believed to have been a British Christian princess circa 600 CE, hence the crown. She was reportedly killed by the pagans in Germany, hence the arrows and was widely revered as a martyr, hence the stars. The twirled inscription at the bottom is a 'W', for Whitelands.

Whitelands Latin motto is 'Ora, Lege, Obedi' which means "Pray, Study, Serve". In the early 2000s, the College adopted a badger as its mascot when we moved from our old site in Putney to Holybourne Avenue. This was because there was a badger colony on the boundary of the campus. Badgers live in a network of tunnels called a 'sett' which gives its name to the college common room and bar on site.



## The Whitelands Guild

The Association for all Whitelanders – Come and Join Us

### Who makes up the Guild?

Whitelands College Guild is made up of students and staff (past and present) of the College and others who have an interest in Whitelands College.

### What is the Guild?

It is a registered charity set up to benefit current and former students and staff of Whitelands College who are in need of comfort or financial help.

The Guild is funded by the generosity of its members. Many members make donations to the various charitable funds over and above their own subscriptions

Whitelands College Guild is firmly rooted in the history of the College, but it is an active group that spans the decades and the world. It has both geographical and chronological groups so that members can meet locally and/or with those they knew at College. Each Year Group and each Branch has representatives that act as liaison for the Trustees with the work of the Guild.

### What does the Guild do?

It publishes a 70 page Whitelands College Guild newsletter twice a year enabling members to keep in touch through their year groups as well as information about college, events and reunions (including May Day) We also provide help to any Whitelander in need and, in the past, have funded Sports Bursaries and students working on special projects.

In addition, the Guild continues to award funds for Professor Garry Marvin's student field trips in South Africa.

### How do I Join the Guild?

Membership is open to all present and past students and staff of Whitelands College.

Full details can be found on the Whitelands College Guild Website at "[http://www.whitelandscolleguild.org](http://www.whitelandscolleg guild.org)" under membership.

The Membership officer is Gwendolyn Horn - please contact her for full details of membership and an application form at [admin@whitelandscolleguild.org](mailto:admin@whitelandscolleguild.org).



# Merchandise

## Guild Merchandise

Our College Guild has many amazing items for sale also. Below is a list of the items you can order and their cost, any questions please feel free to reach out to them on their Whitelands Guild Page ([www.whitelandscollegeguild.org/](http://www.whitelandscollegeguild.org/)).

- 1 Hessian Tot Bag..... £3.50
- 2 Oven Gloves ..... £5
- 3 Tea Towel ..... £5
- 4 Scarf ..... £10
- 5 Tie .....£10
- 6 Notebook and pen .....£5
- 7 Torch .....£6
- 8 Key Rings ..... £4
- 9 Bone China Mug..... £7
- 10 Ballpoint Pen .....£1



## College Clothing and Merchandise

Being part of Whitelands, we want to offer you the chance to feel as proud of our College as we are. A wide range of University and college-specific merchandise is available from the University Students Union shop. To find out more simply visit the Student Union on Froebel College next to the Student Union Bar. You can also enquire about college specific merchandise by contacting your college team. We have college hoodies, scarves and pin badges available to purchase throughout the year. Visit your College Office in room G13 between 9am and 5pm, Monday to Friday to see the merchandise that is available. Our hoodies and pin badges are a great way of showing college pride and make an ideal gift for family and friends to share your Whitelands experience with them!

You can also visit our online store by visiting our website or by typing in [www.roehampton.ac.uk/colleges/whitelands-college/merchandise](http://www.roehampton.ac.uk/colleges/whitelands-college/merchandise).





# Chaplaincy



The Rev Dr. Daniel Eshun is the Whitelands College Chaplain and is the recognised Anglican Chaplain to the University. Daniel can be found in his office G01 which is just inside the chaplaincy room which is left off main reception. He is happy to chat with you about anything from Anthropology to Zoology, and/or American Football to Zimbabwe Cricket! Whitelands College Chaplaincy provides a forum for good conversations, lots of laughter, individual support, friendships, enjoying free teas, coffee, biscuits, and cakes. Whitelands Chaplaincy is a place you can be yourself, learn a lot and socialise at the same time, knowing fully well that no one is going to assess you at end of the academic year! For further information, or to make an appointment to see the Chaplain, please contact Rev Dr Eshun or give him a call on 020 8392 3516 . The Whitelands Chaplaincy lounge is situated on the ground floor of the College, adjacent to Reception. It is open every day for students and staff for



informal conversations or as a space for reading or study. The Chapel, which is entered through the Chaplaincy, is available for much of the week as a quiet space for reflection, prayer, and meditation. (During the day on Thursdays and Fridays it is in use for teaching).

## Prayer Room

The prayer room at Whitelands is currently in room G26. The room is accessible with your ID card throughout the day, and people of all faiths are very welcome to use it. This room is rooted in the Islamic tradition and therefore there is a space for brothers and a separate space (by a partition) for sisters. You can find prayer mats, copies of the holy Quran and other helpful resources in the rooms. The room has an ablution facility located nearby.

*Islamic prayer rooms have prayer mats available and copies of the Holy Quran (left) and Ablution facilities (right) can be found on campus.*





## Activities of Whitelands Chaplaincy

Everyone, of whatever faith or none, is welcome to attend any of these activities, either to participate or simply to observe.

- Morning Prayer is held every weekday morning in term time from 8.45–9.00 a.m., and communion is celebrated every other Tuesday in term time from 5.30–6.00 p.m. (every two weeks)
- Liturgical services are also held to mark special occasions: they include Year's Start (in the third week of term); Christmas (in early December); Candlemas (in February); Shrove Tuesday (the day before the start of Lent); Maundy Thursday (the day before Good Friday); and a Valedictory service (in May). Other religious services are organised from time to time.
- Friday Jummu'ah prayer takes place on campus, for further details please see our social media platforms (links below) or email Sabiha (Muslim Chaplain) on: [sabiha.iqbal@roehampton.ac.uk](mailto:sabiha.iqbal@roehampton.ac.uk)

The Chaplaincy team also organises social events, field trips to museums, art galleries, and other activities that provide opportunities for new and continuing students to make friends. All our religious services, social events and activities are advertised on the Chaplaincy noticeboards, as well as on social media.

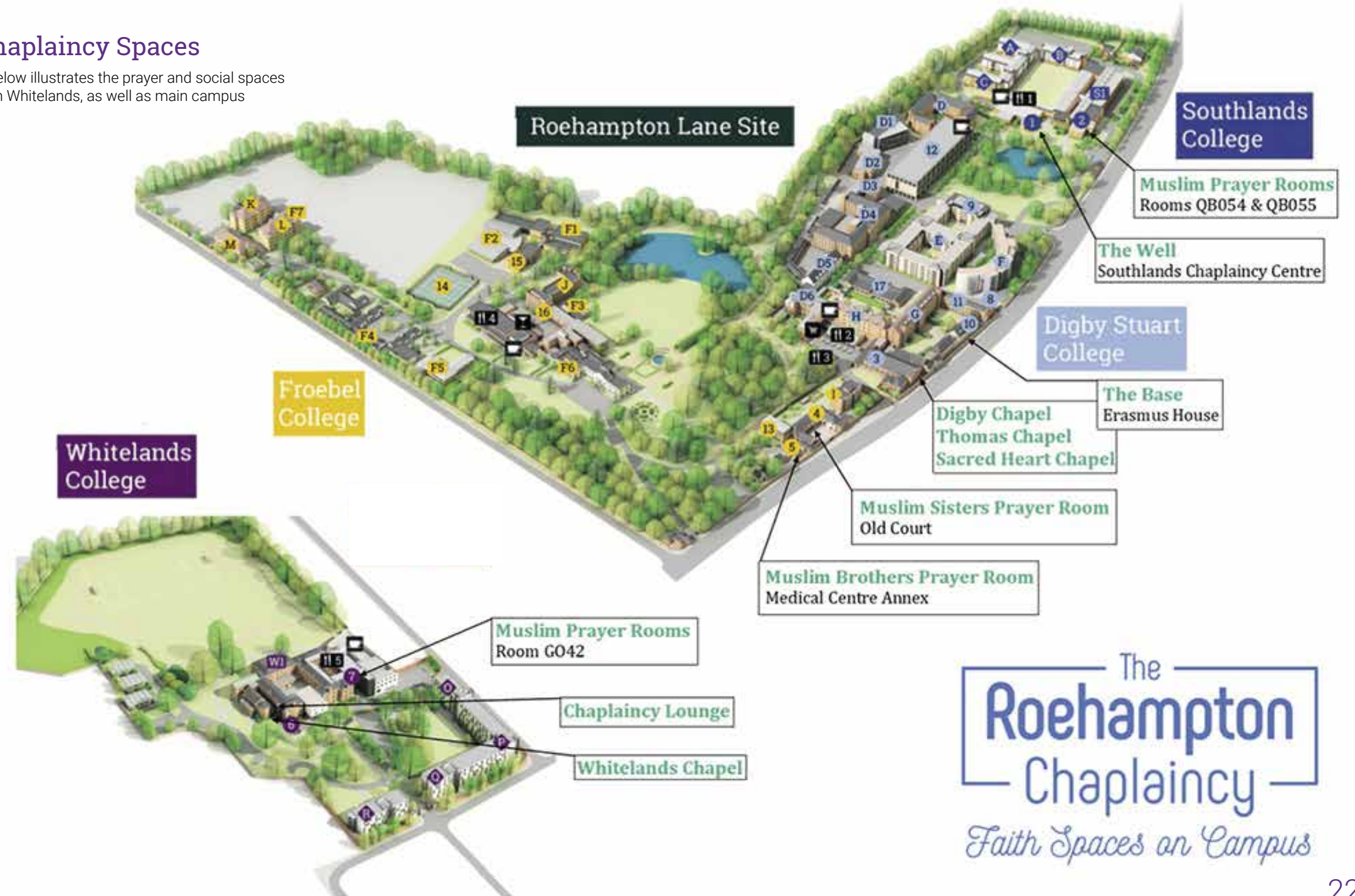
## Social media

Stay up to date with activities by following us on social media, these are our official accounts:

- Facebook: Roehampton Chaplaincy
- Twitter: RoeChaplaincy
- Instagram: @RoeChaplaincy

## Our Chaplaincy Spaces

The map below illustrates the prayer and social spaces available on Whitelands, as well as main campus



The  
**Roehampton**  
Chaplaincy  
*Faith Spaces on Campus*



# On campus facilities

## Computer Suite (1 & 2)

At Whitelands we have two silent study areas including Manresa Hall. Whether you have breaks between your lectures or need a space to focus on your work for a few hours, these study spaces are perfect for getting you in the working mood and for concentrating on your studies. When you are taking a break from hard work, be sure to look up at the old chapel's ceiling which is among the most beautiful in the University.

## Quiet study room

There is also a second quiet study area, which is found outside the Gilbert Scott Lecture Theatre on the ground floor just past the College vending machines. This area has a few dedicated computers for use and space for students to study in a quiet environment.

## Student Common Area (3 & 4) (The SETT bar)

Open 8am–5pm (Monday to Friday)

The SETT is open every day and offers a range of hot and cold drinks, paninis, toasties, and a lovely environment overlooking Richmond Park for a coffee, cake, and a chat. We also have a large projection screen used to display the daily news channels and a games system to play with friends that can be used by booking an appointment with the Student Leadership Manager.

## College Kitchen and Student Lockers (5)

In our SETT bar we have the student kitchen area at the back where you can make use of the communal fridges and microwaves. Also located here are the daily use lockers, where by swiping your student card you can store any belongings securely for the day. These lockers are free to use and open to all students at the University.

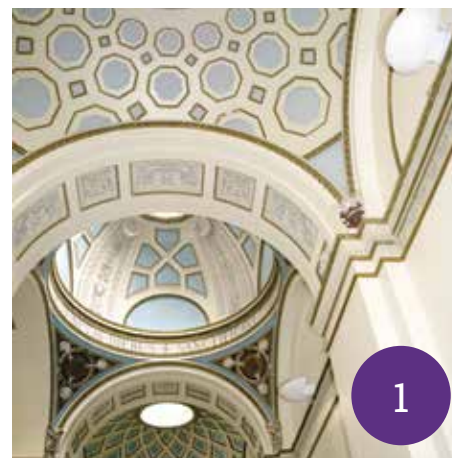
## Whitelands Diner (6)

Open 8am–3pm (Monday to Friday)

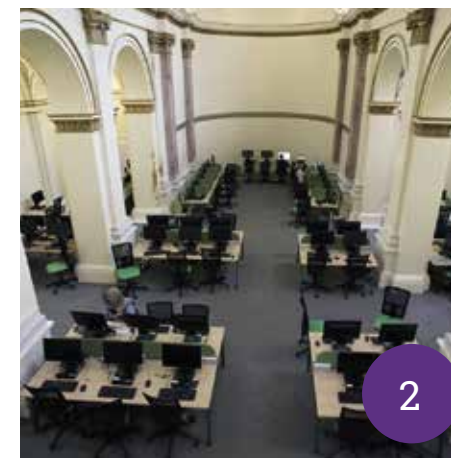
The Diner serves breakfast and seasonal main meals throughout the year and if you wanted something lighter it has a range of soup, sandwiches and salads, it's a perfect place to meet up with friends when you are at Whitelands.

## Sports Field and Grounds (7–9)

The College is situated on beautiful grounds, with a multitude of flora and wildlife to relax within during your studies. Whitelands is also spoilt by having its very own football pitch and large playing field at the rear of the building which overlooks Richmond Park. The pitch is often used by University teams for practice but can also be used and booked by Whitelands students if they wish to hold an activity on the grounds. Just contact the College Office.



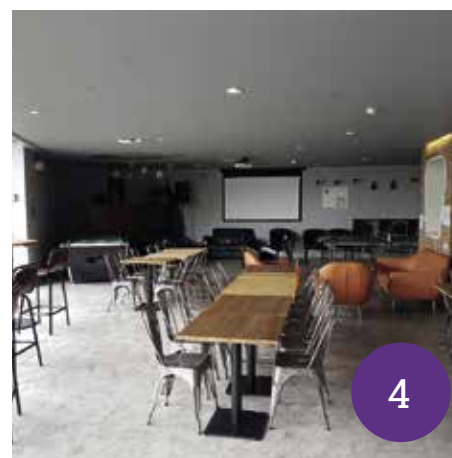
1



2



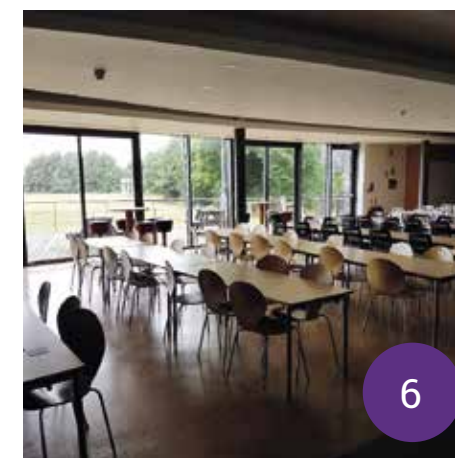
3



4



5



6



7



8



9



# Living at Whitelands

## Health

We would advise you to register with the Student Medical Centre, which is situated in Old Court in the grounds of Froebel College. If you have a medical condition and you may need to alert a first aider, you should brief the Security Staff as a precaution

## Trespasser or Unwelcome Visitor and Overnight Visitors

You must keep your rooms and flat locked to prevent unauthorised access to flats and corridors. Ring Security (020 8392 3333) if you are suspicious of strangers. You will get to know your neighbours but be a little guarded until you know who is who.

Overnight Visitors must comply with the relevant sections of the residence contract and must be signed in. It is essential for the Security Staff to know who is staying on campus in case of a fire or other emergencies.

## Residency Agreement

Please make sure that you read your contract thoroughly and that you are fully aware of its requirements and provisions.

## Be Considerate

Many students, including first years, request quiet flats where they can study and sleep without disturbance. Please be considerate to your neighbours. Students creating undue noise after 23:00 will be reported and persistent nuisance can lead to eviction.

## Students' Right to Privacy

If you live on campus your room is kept as private as possible throughout the year. Access may be needed for maintenance and cleaning, or if a pressing Health and Safety issue arises.

## Parking

Please note that student parking is not allowed anywhere on campus between the hours of 8:30am – 4:30pm on Mondays to Fridays (during term time), except for those with limited mobility reasons on a permanent or temporary basis.

Outside these hours, students may park on campus, but cars must be removed by 8am the following morning.

## Laundry Rooms

Can be found on the ground floor of Cheltenham Block which contains card-payment operated washing machines and dryers.

## Shopping

There is a useful range of shops, including two medium-sized shops, just down the road from the College in Danebury Avenue. An Asda Store is at Putney Vale, a short bus journey on the 265 or 85 bus along Roehampton Lane.

## Smoke and Fire Alarms

The alarm system is very effective and very sensitive, so please follow these simple rules. When cooking in the kitchen, open the window, close the door, and do not leave your cooking unattended. Never try to cover the smoke detector head, as they are there for your safety to ensure that real fire is detected early to allow everyone to get out of the building quickly and safely.

Covering the smoke detector is a criminal offence and will lead to immediate disciplinary procedure and the resulting eviction of any resident student.

## General Fire Safety

Respond immediately, if you hear the fire alarm, whatever the time is, even if you think it is a false alarm. Do not tamper with any fire-fighting equipment; it will not be there to use when it is needed if you sprayed it at your flat mate last night for a joke! Tampering with any fire precautions, false fire alarms caused by deliberate activation, carelessness or smoking, failure to evacuate on a fire alarm, covering a detector, and any other fire safety related misdemeanours will be subject to disciplinary action and a financial penalty.

## Smoking

Smoking is not allowed in any college building, including the residences. Burning candles and incense sticks is also forbidden since they are a fire hazard.

Failure to observe these bans may result in eviction.

## Electrical Appliances

For those residents in college all portable electrical appliances must be tested. This will happen during the first term.

## Security Staff

Security staff are on duty 24/7 throughout the University and there is a physical presence at the Whitelands Reception between 9am and 6pm per weekday. If the reception desk is unattended, you can contact Security at the main gate house.

To contact Security at any time in an emergency just ring 3333 from a University phone or **020 8392 3333**. For other enquires to Security, phone 3140 or **020 8392 3140**.

## Cleaning in College Rooms

The communal areas of all flats are cleaned every week. Students are responsible for keeping their own rooms clean. Vacuum cleaners are provided in every flat for this purpose. Mop, bucket and dustpan with brush are available in kitchen cupboards. At the weekends residents are responsible for putting rubbish in the communal bins (outside the residences).

All residents are required:

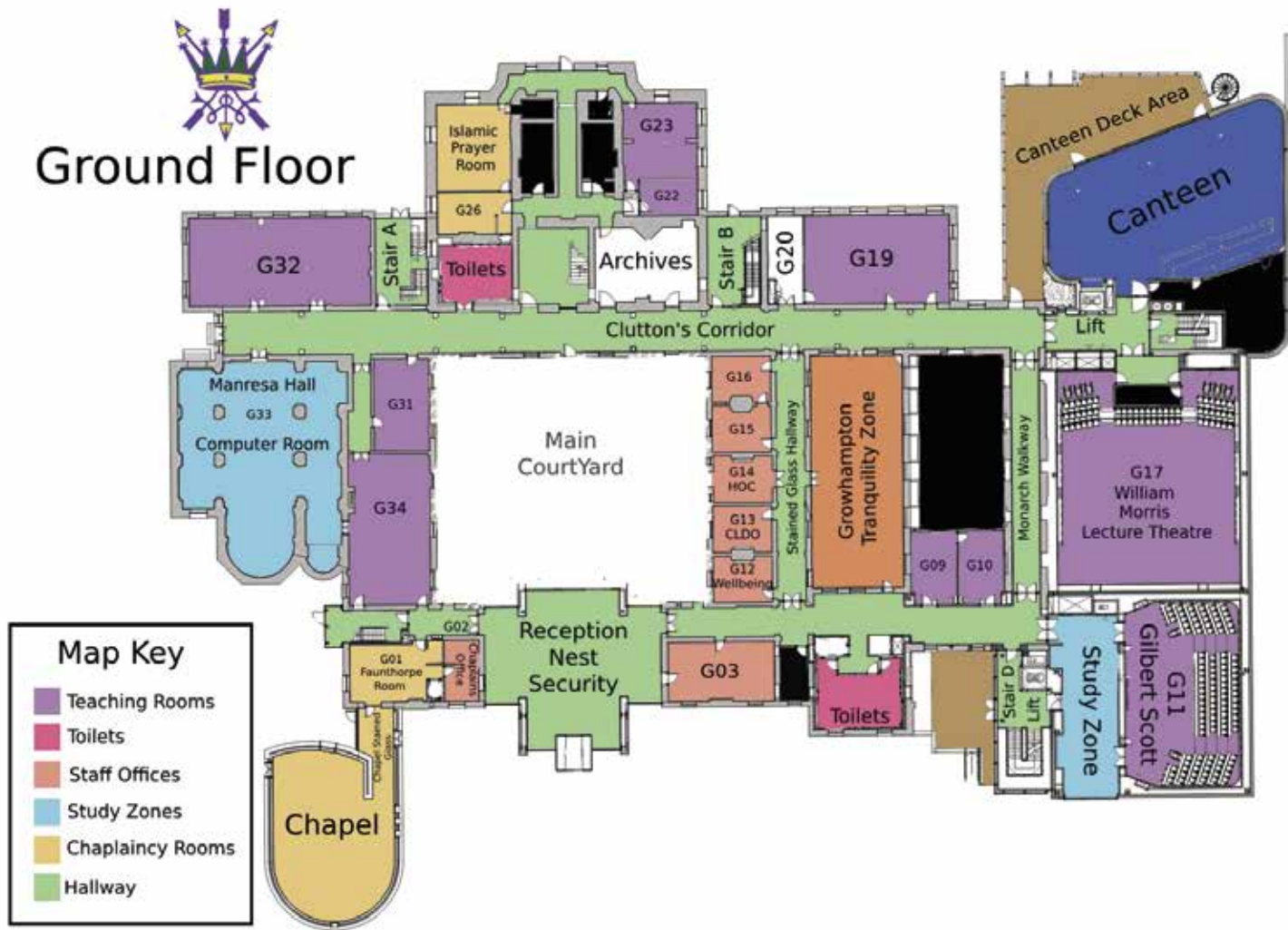
- To do their own washing up and clearing away
- To clean the oven, grill, microwave & fridge/freezer
- To take joint responsibility for the common areas of the flat/hall
- To keep their own room clean
- To allow access to rooms for domestic and maintenance staff

Students who regularly leave their kitchens in a mess and do not clean their fridges and ovens may find themselves facing a charge from the Accommodation Office.

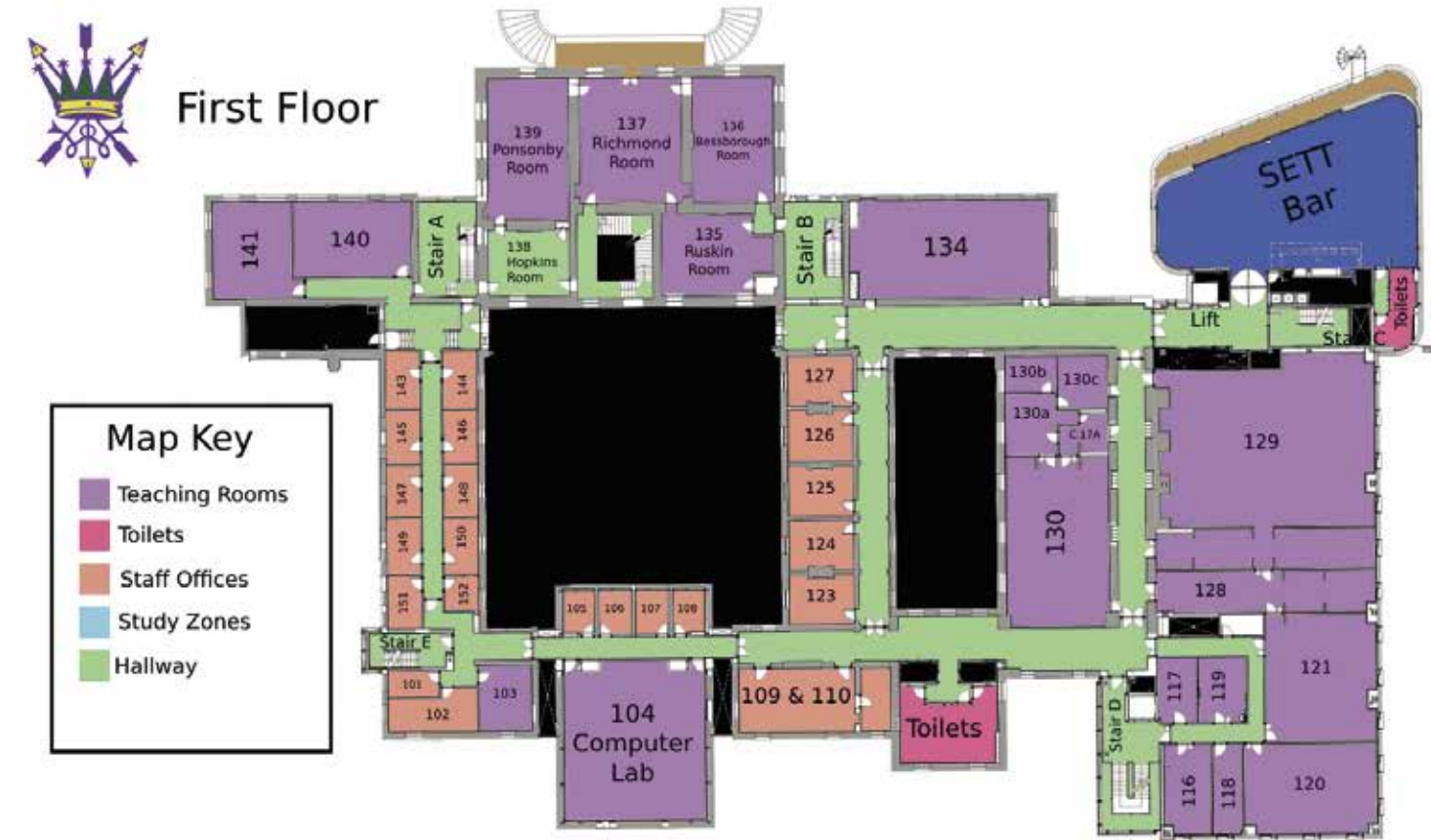
Please respect each other's property; this includes food. Any case of pilferage will be treated as theft.



# Whitelands College Map



It can sometimes be daunting coming to a new place and finding your way around. Here, you will find a floor plan map to help you find your way around our College's building.





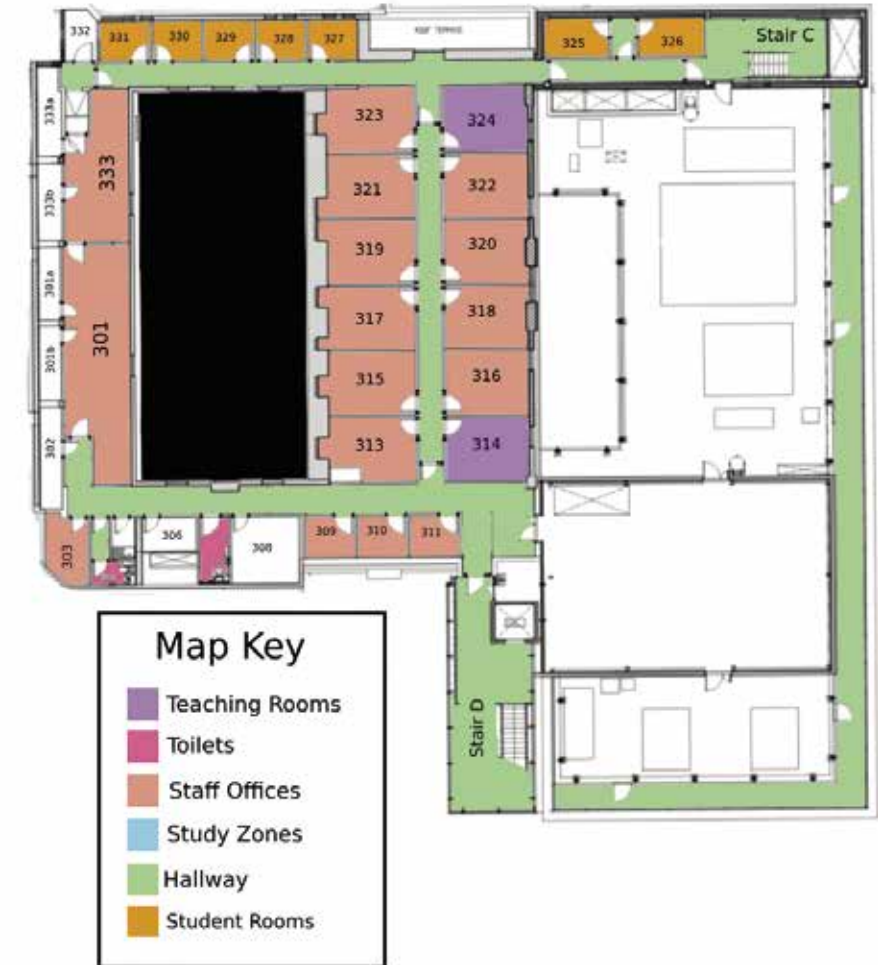


## Second Floor

Map Key	
	Teaching Rooms
	Toilets
	Staff Offices
	Study Zones
	Hallway



## Third Floor





# Directory of College Team

The room number prefix identifies the building (G= Ground Floor) while the digit (if no letter appears) identifies the room number, (e.g. G13 = Parkstead House, ground floor, Room 13; 134 = Parkstead House, first floor, room 134). All telephone numbers are 020 8392 followed by the four-digit internal number shown in bold.

Whitelands Reception		020 8392 <b>3500</b>
Whitelands College Main Office	Steven Taggart Steven.Taggart@roehampton.ac.uk	(G13) 020 8392 <b>3511</b>
Student Wellbeing Officer	WhitelandsWellbeing@roehampton.ac.uk	(G12)
College Chaplain	Daniel Eshun d.eshun@roehampton.ac.uk	(G01) 020 8392 <b>3516</b>
Head of College	Dr. Nick Mayhew Smith nick.mayhewsmith@roehampton.ac.uk	(G14) 020 8392 <b>3501</b>
Security and College Warden	Emergency 3333; enquires 3140	